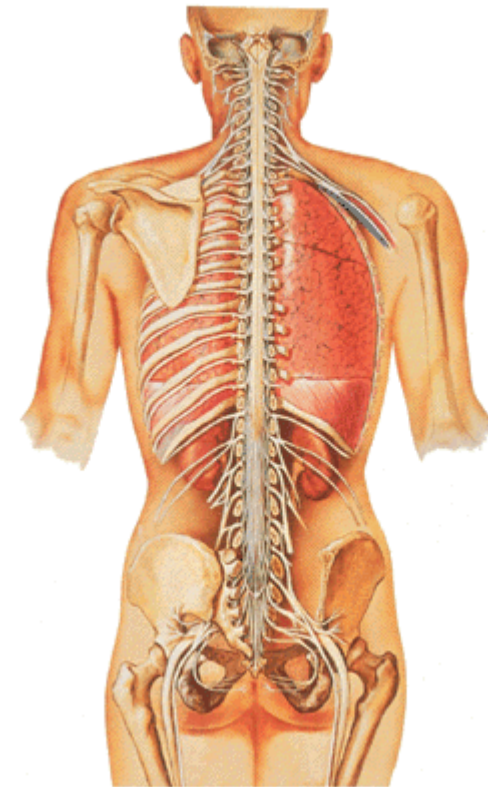
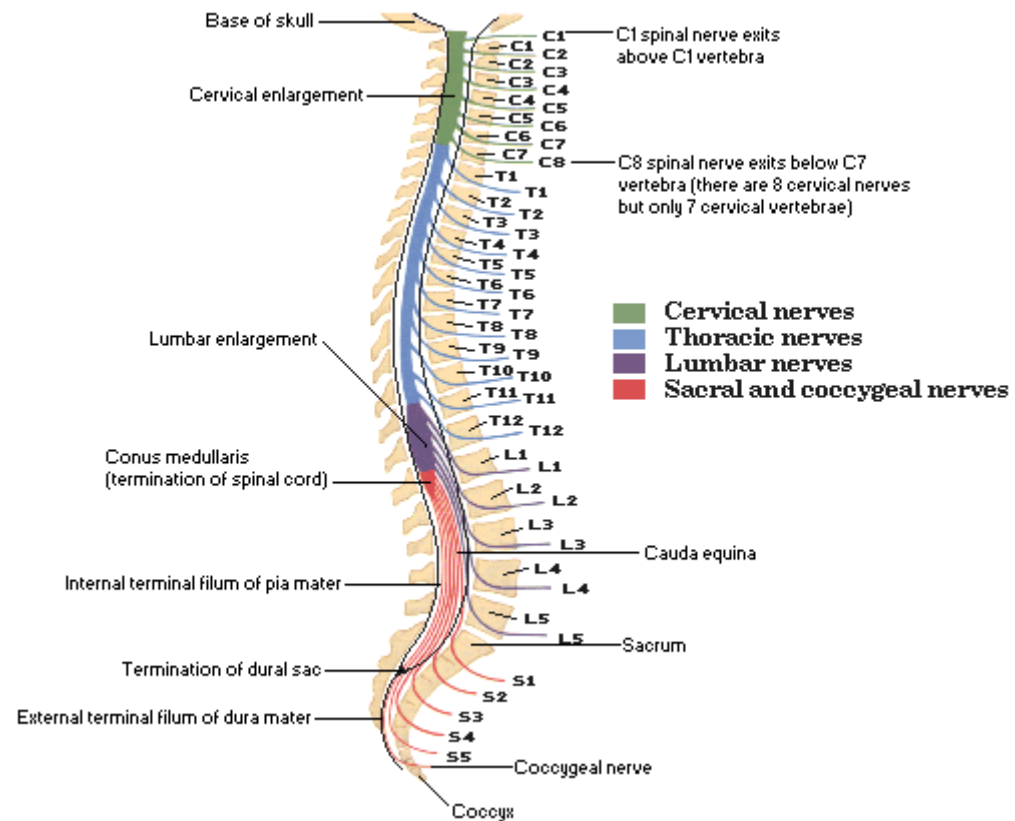
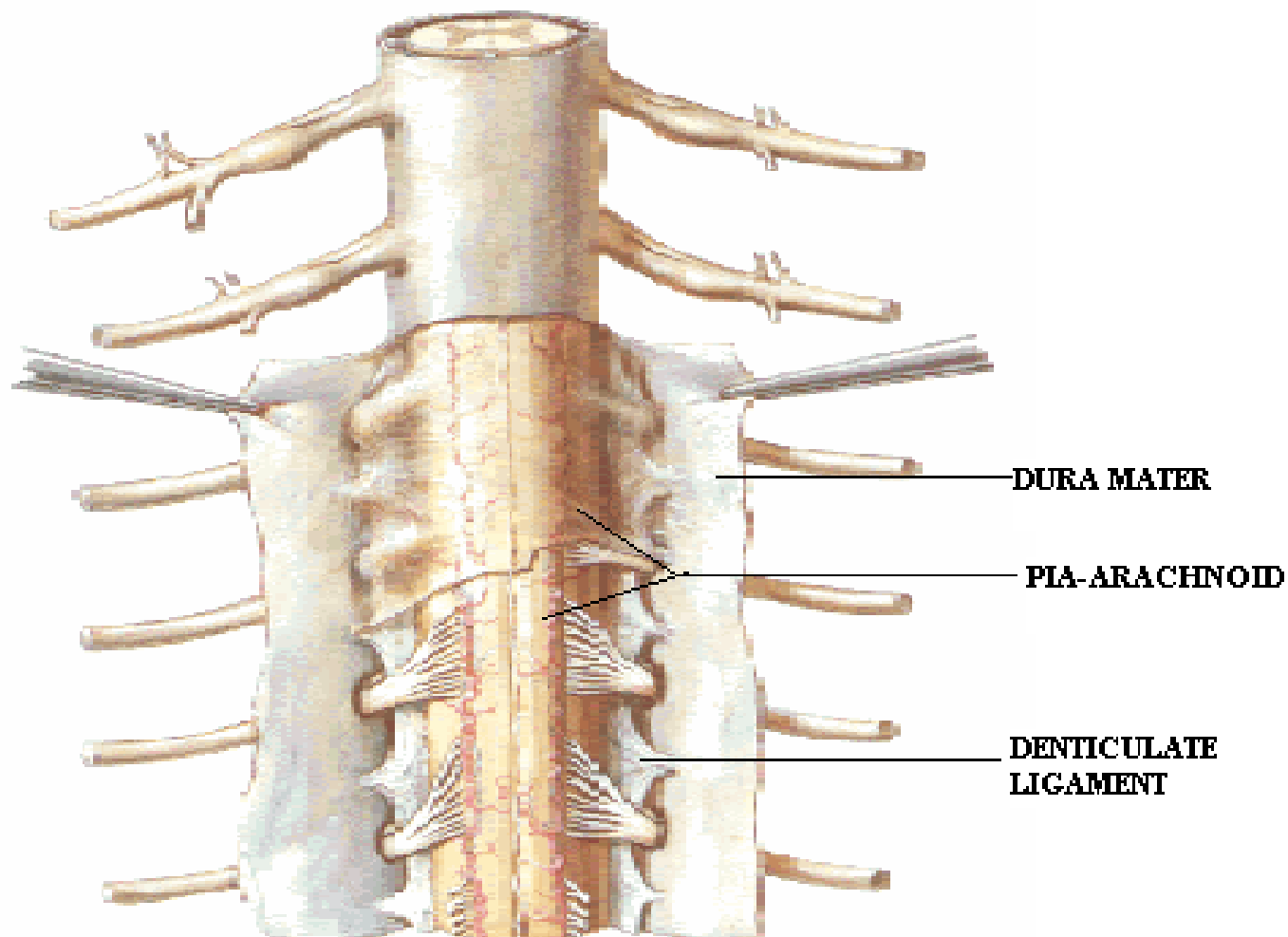


SPINAL CORD

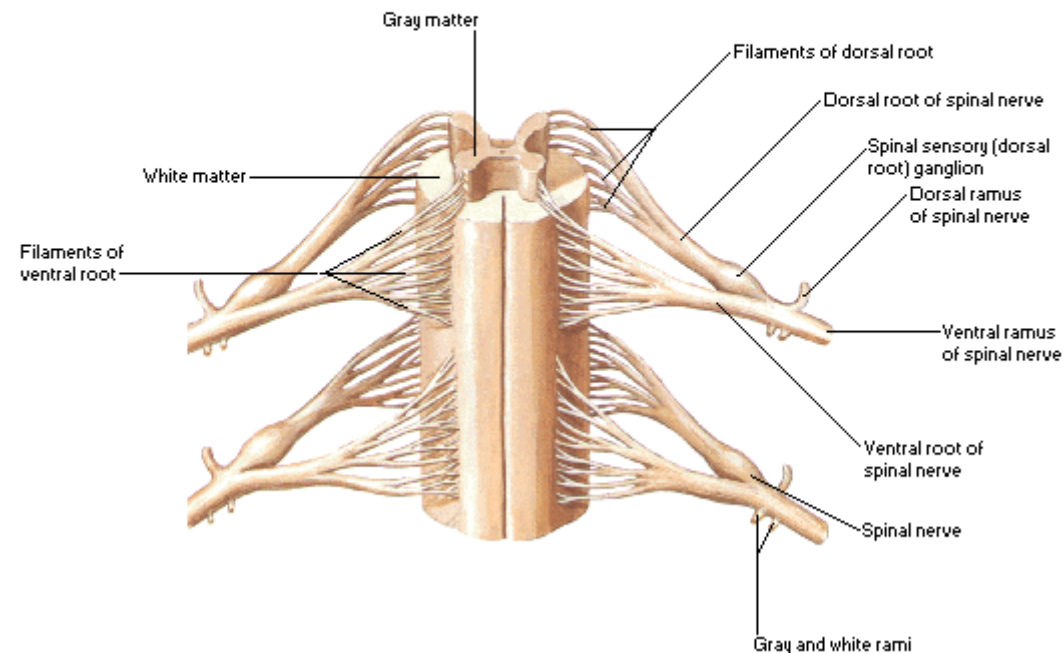


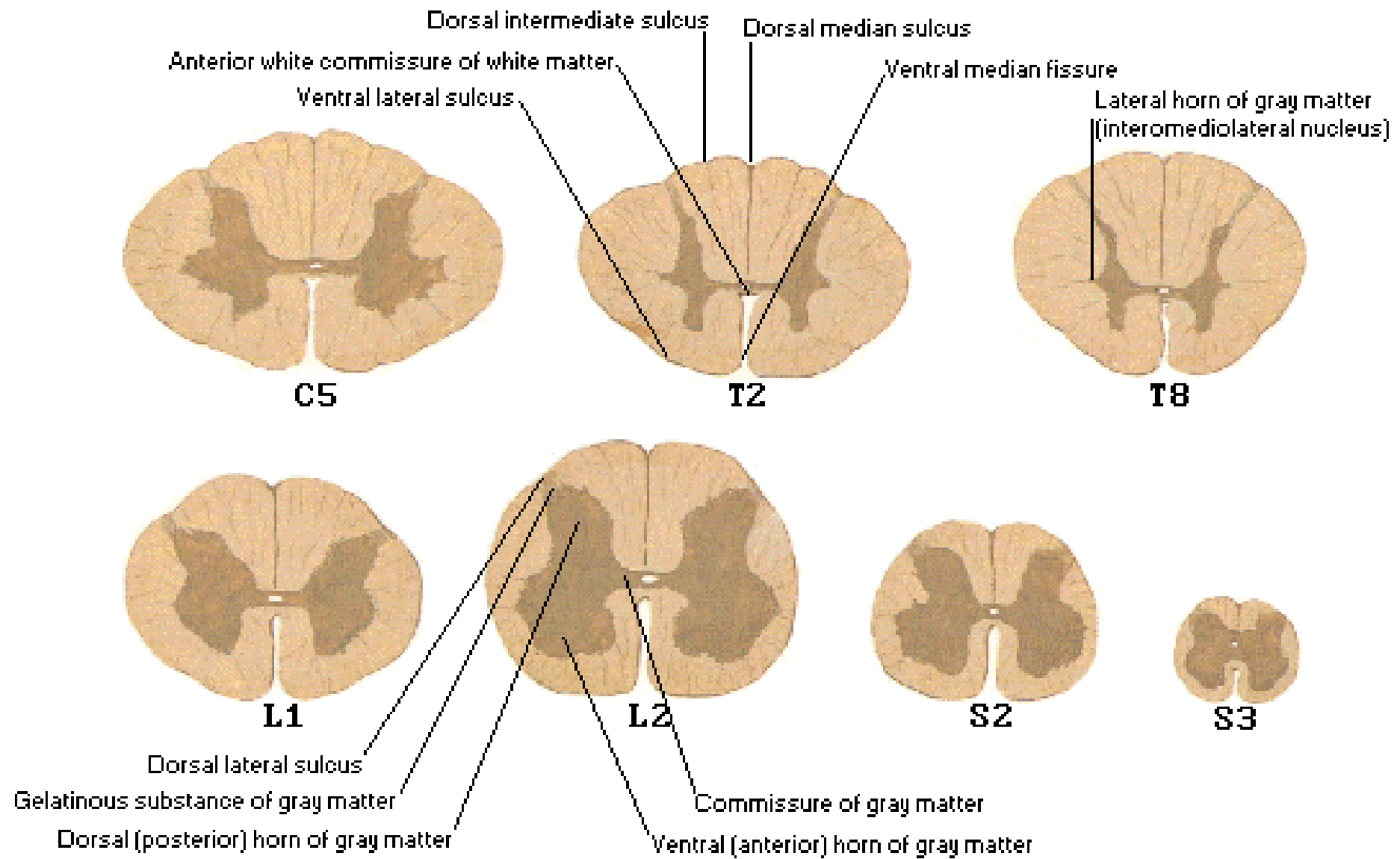
COVERINGS OF SPINAL CORD



SPINAL SEGMENT

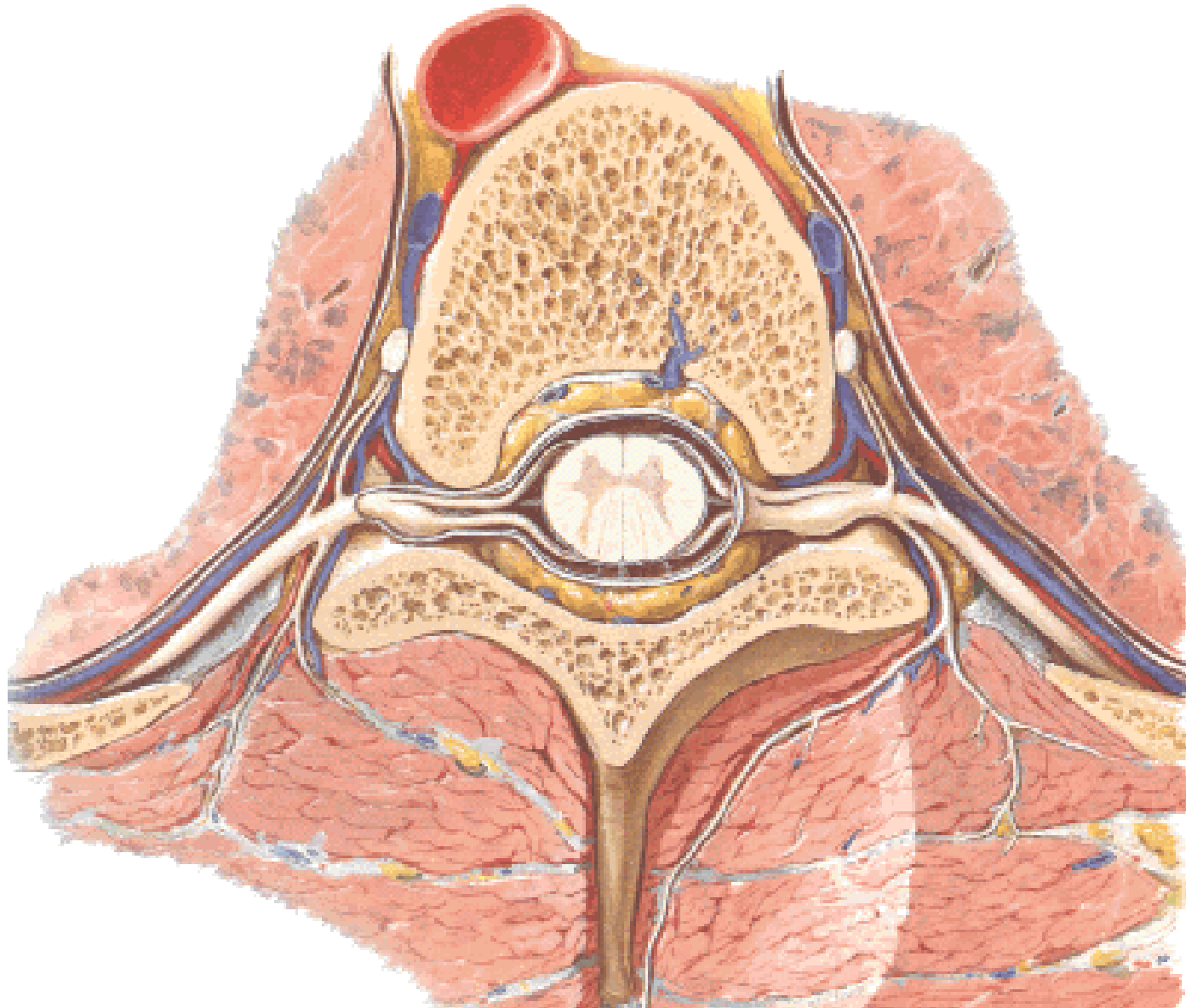
Spinal Membranes and Nerve Roots Anterior View



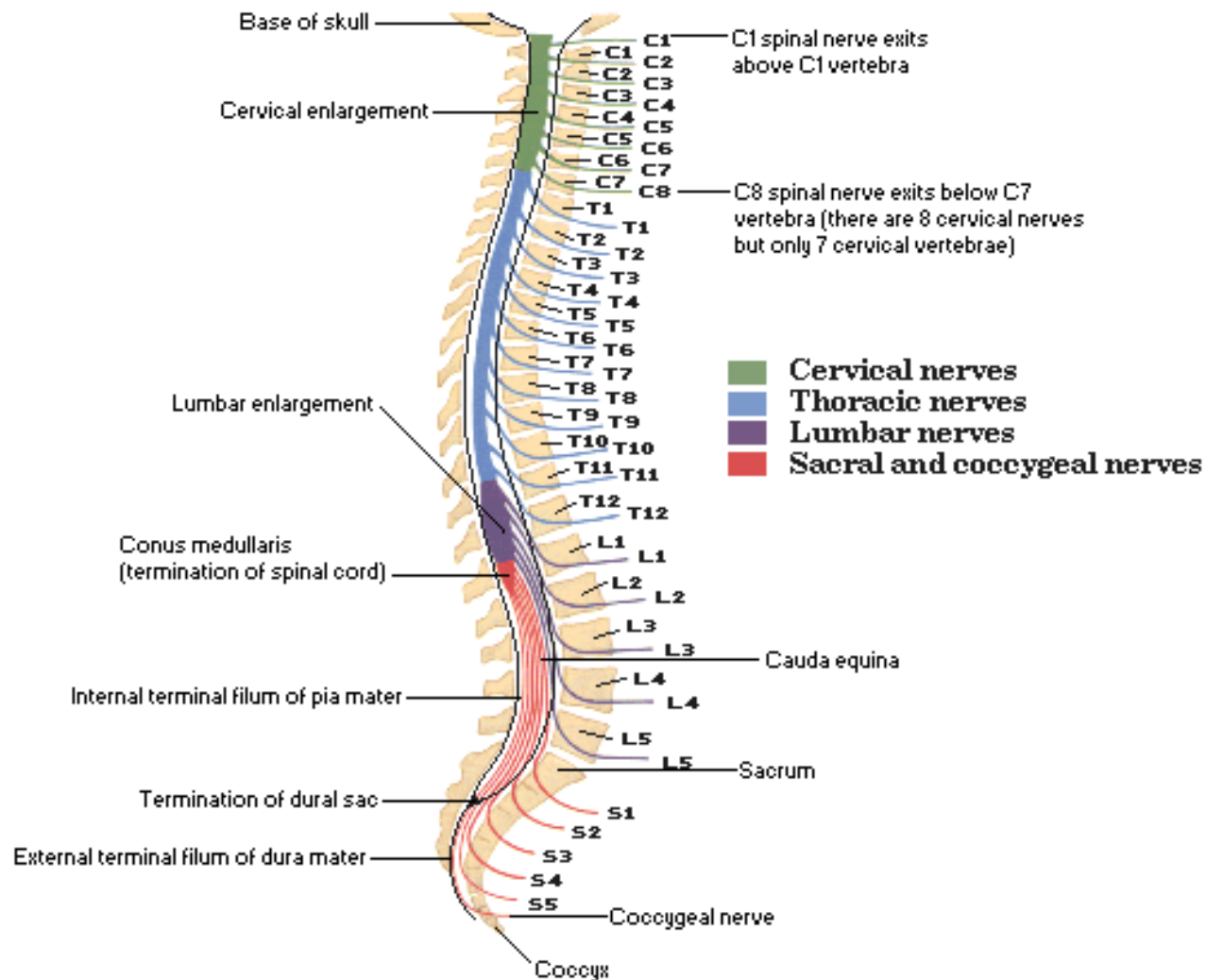


Spinal Nerve Origin

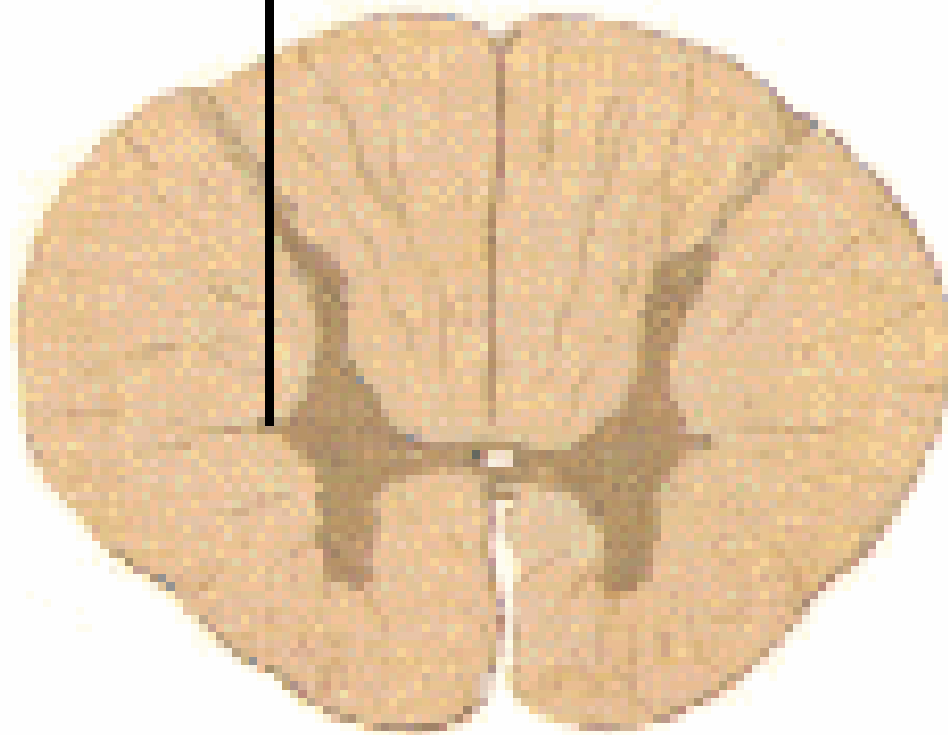
Section through Thoracic Vertebra



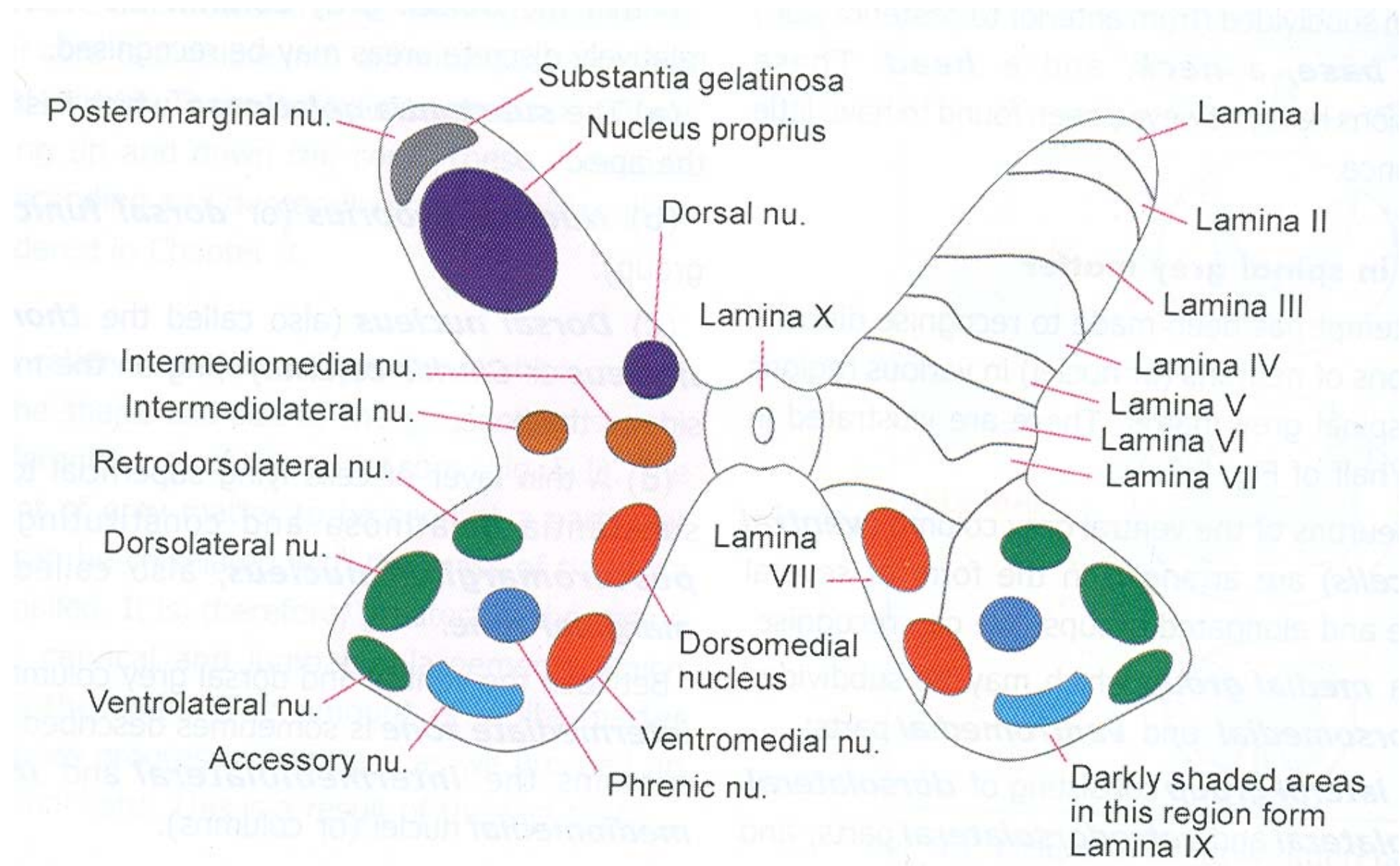
VERTEBRAL LEVELS AND SPINAL SEGMENTS



Lateral horn of gray matter
(interomediolateral nucleus)

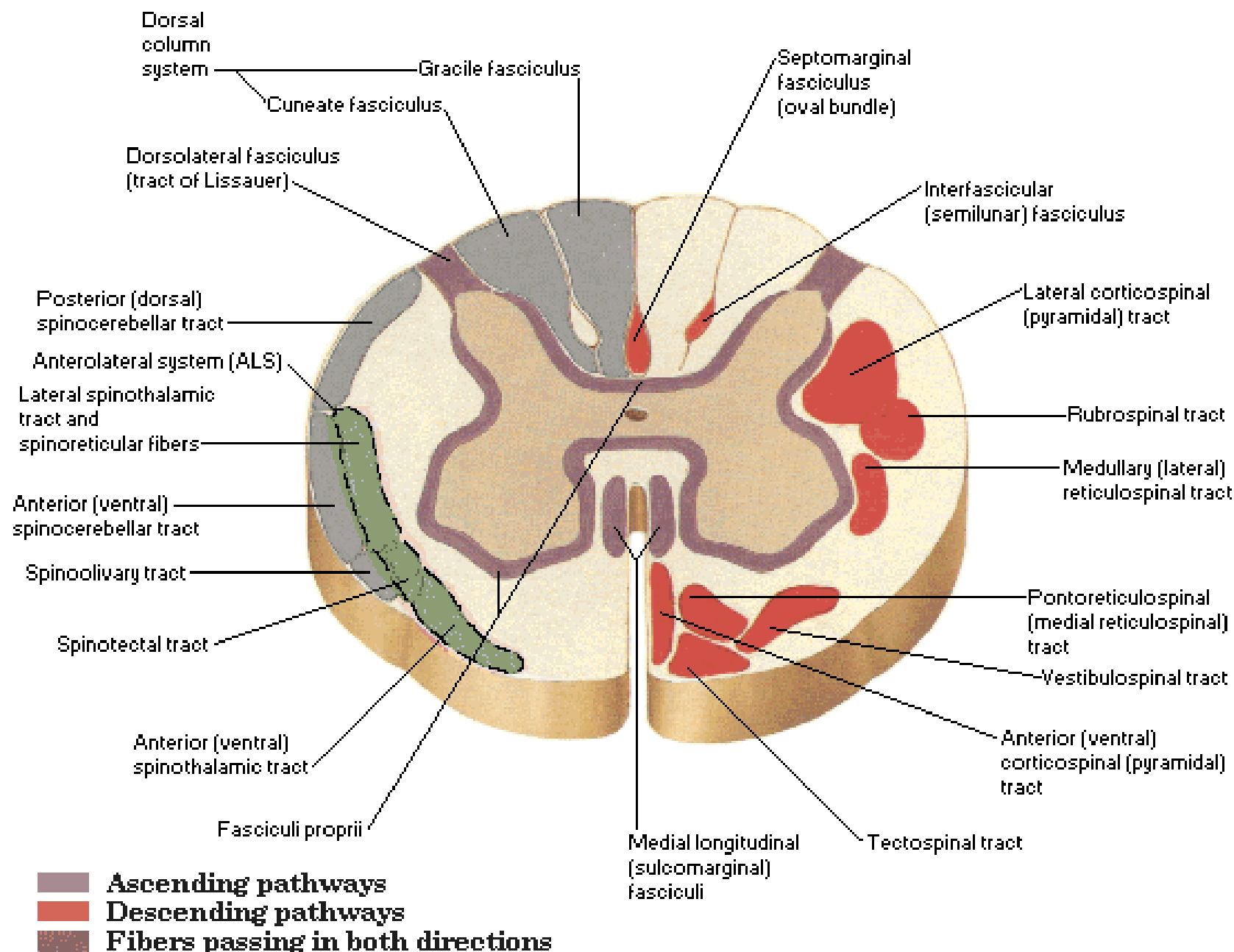


T8

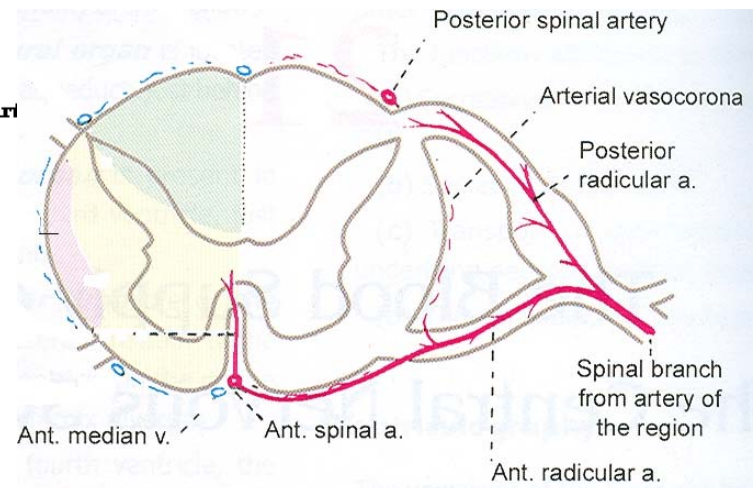
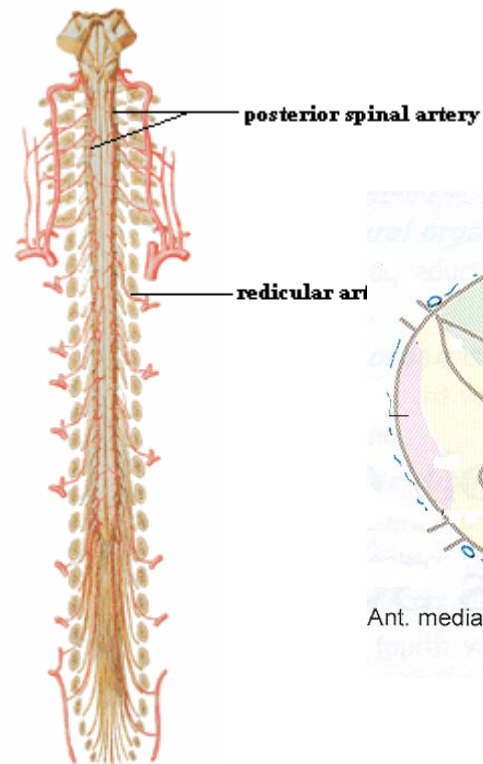
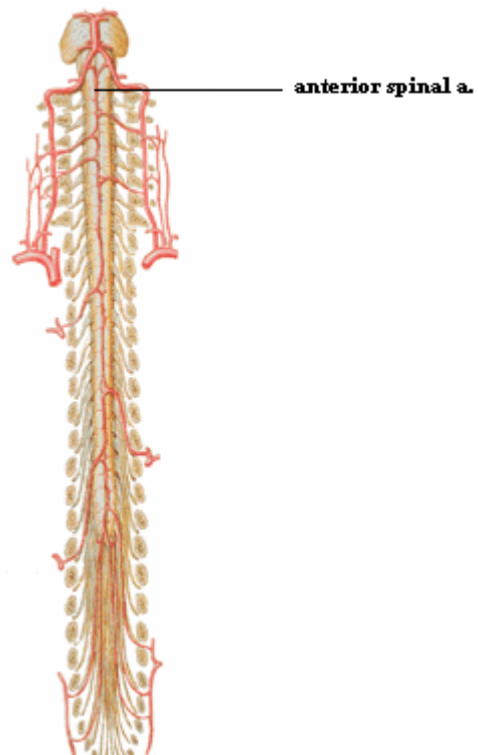


Spinal Cord Cross Sections

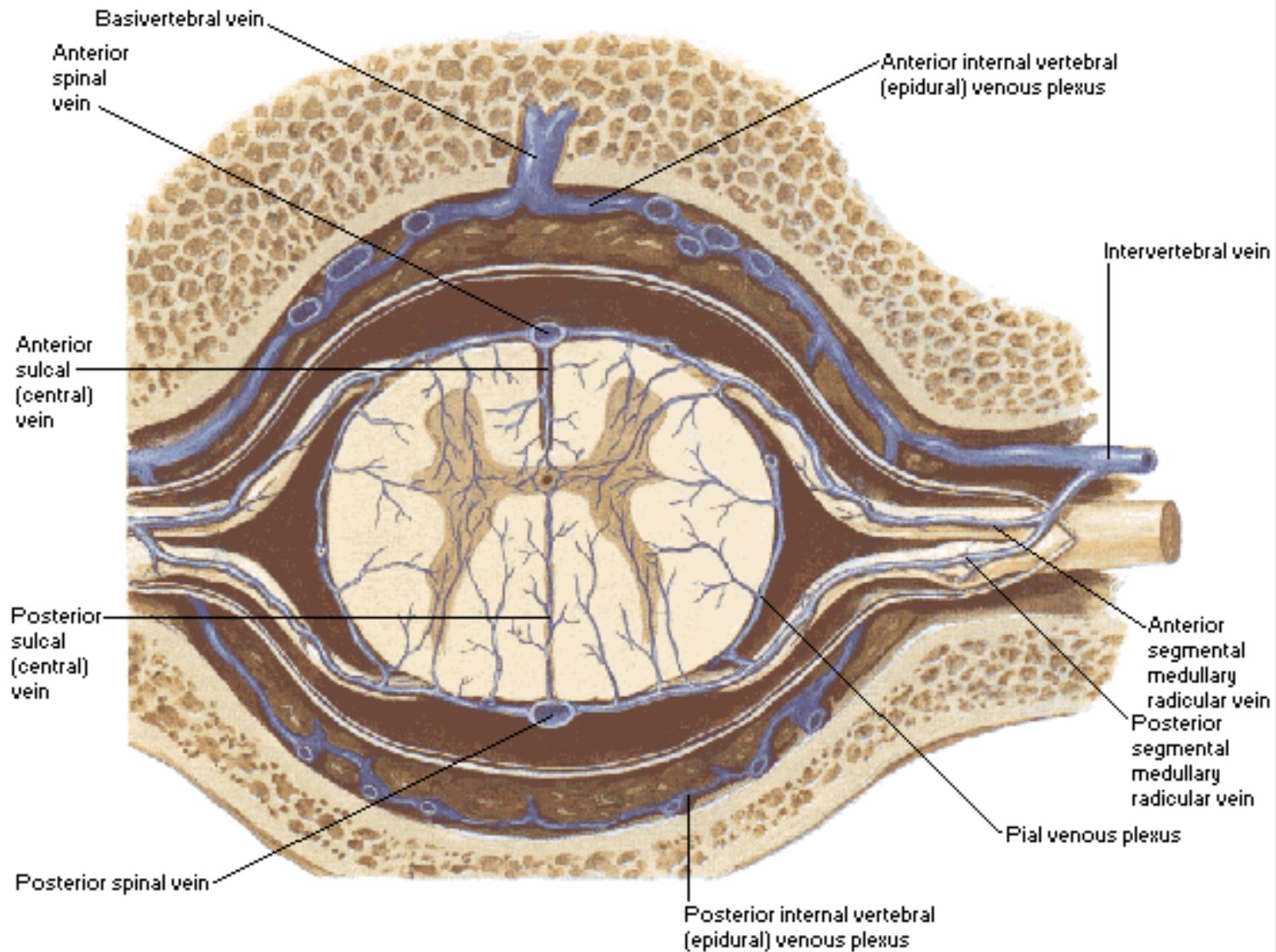
Fiber Tracts



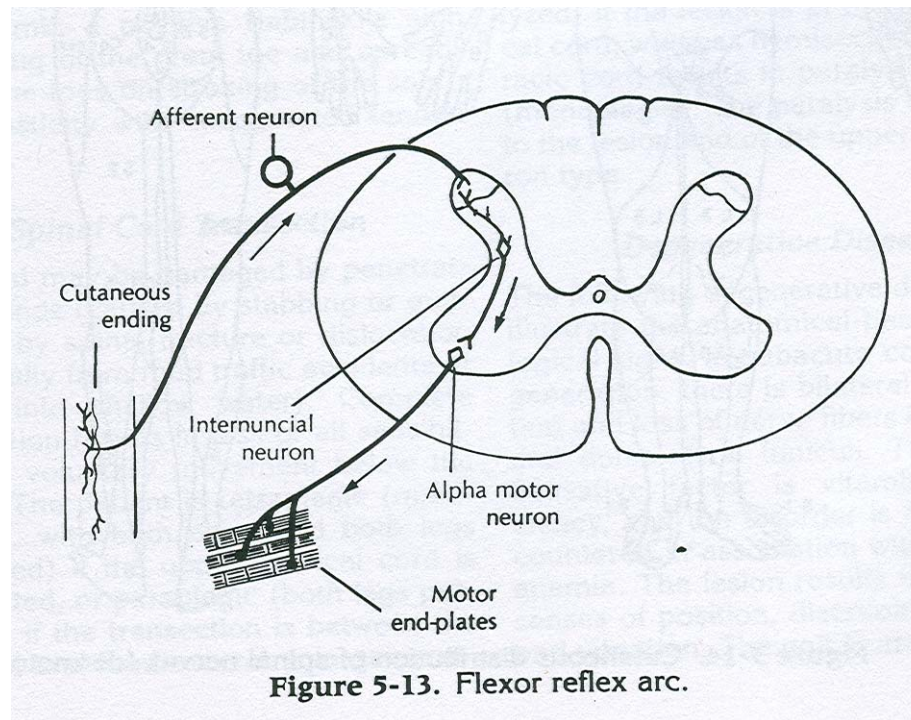
ARTERIAL SUPPLY



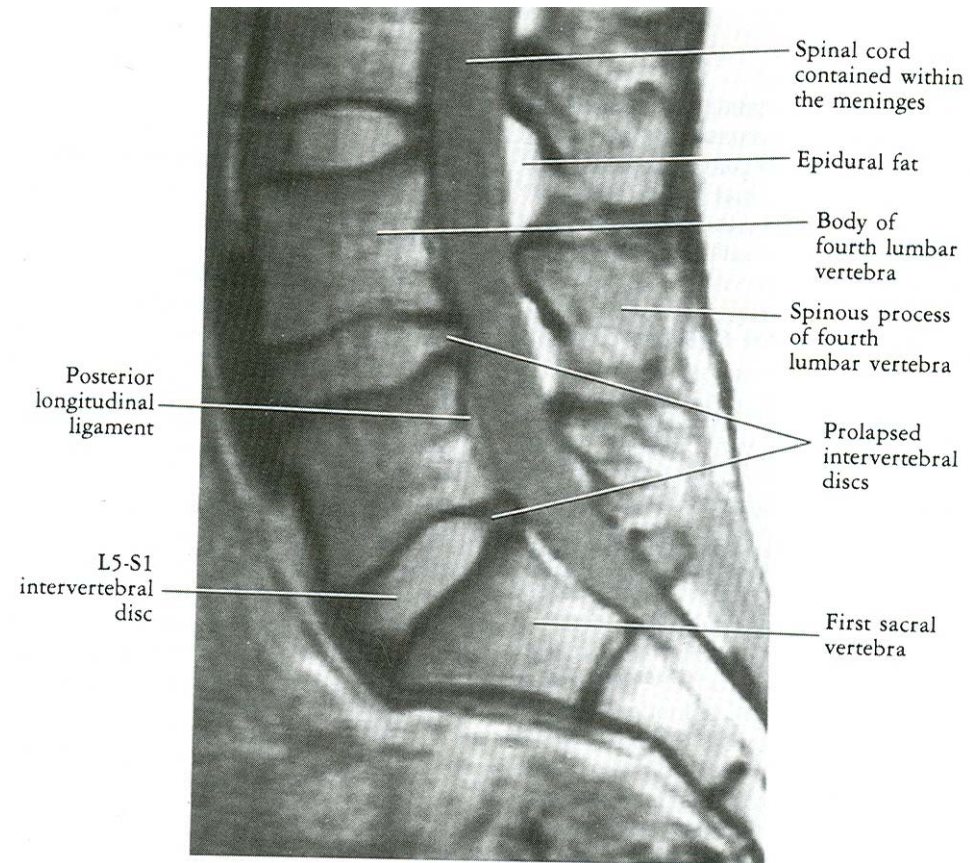
VENOUS DRAINAGE



REFLEX ARC



IMAGING TECHNIQUES



CLINICAL ASPECT

- Spinal shock- all somatic and reflex activity is abolished for some time immediately after any injury to spinal cord
- Complete Spinal cord transection
 - Quadriplegia
 - Paraplegia

- Hemisection of spinal cord – Brown- Sequard Syndrome
- Degenerative diseases
 - Motor neuron disease
 - Poliomyelitis
 - Syringomyelia

