

# Conjunctiva

## Lecture 4



DR PARUL ICHHPUJANI  
ASSISTANT PROFESSOR  
DEPTT. OF OPHTHALMOLOGY,  
GOVERNMENT MEDICAL COLLEGE AND  
HOSPITAL, SECTOR 32, CHANDIGARH



- **“Your mind knows what your eyes see.....”**

Lets' get Quizzical today.....



# Question1



- **Difference between membrane and pseudomembrane?**



# Answer 1



- **Pseudomembranes** and **membranes** are the result of an exudative process and differ only in degree.
- A pseudomembrane is a coagulum on the *surface* of the epithelium, and when it is removed, the epithelium remains intact.
- A membrane is a coagulum involving the *entire* epithelium, and if it is removed, a raw, bleeding surface remains.
- Pseudomembranes or membranes may accompany epidemic keratoconjunctivitis, primary herpes simplex virus conjunctivitis, streptococcal conjunctivitis, diphtheria, cicatricial pemphigoid, and erythema multiforme major.
- They may also be an aftermath of chemical burns, especially alkali burns.

## Question 2



## Answer 2



- **Gonococcal conjunctivitis**

## Question 3



**22 year old male with urethritis and conjunctivitis?**

## Answer 3



- **Chlamydial Inclusion Follicular conjunctivitis**

## Question4



10 year old boy with itchy and scratchy eyes? What do you see here?

## Answer 4



- **Palpebral form of Vernal Catarrh showing cobblestone appearance**

## Question 5



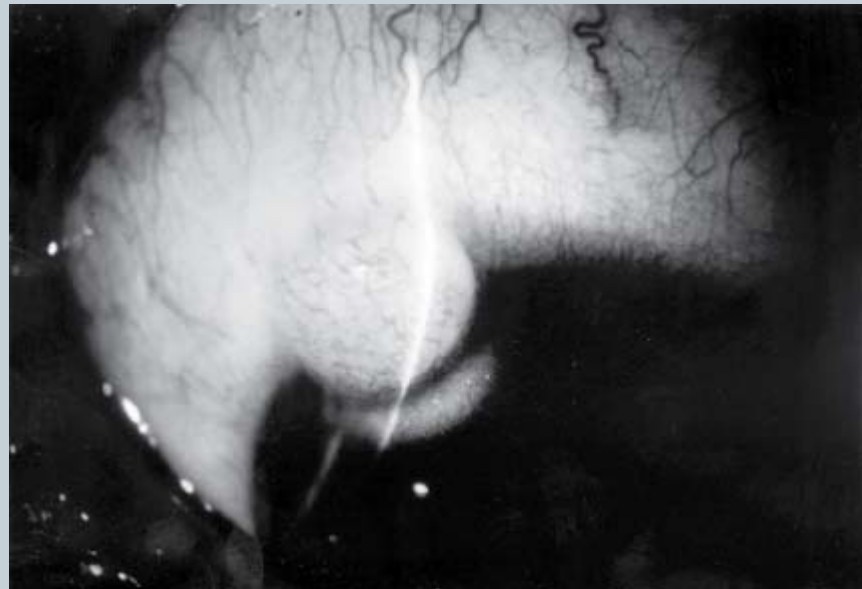
**Condition and causes?**

## Answer 5



- **Concretions.**
- **Dry Eye, chronic lid disease caused by staphylococcal species.**

## Question 6

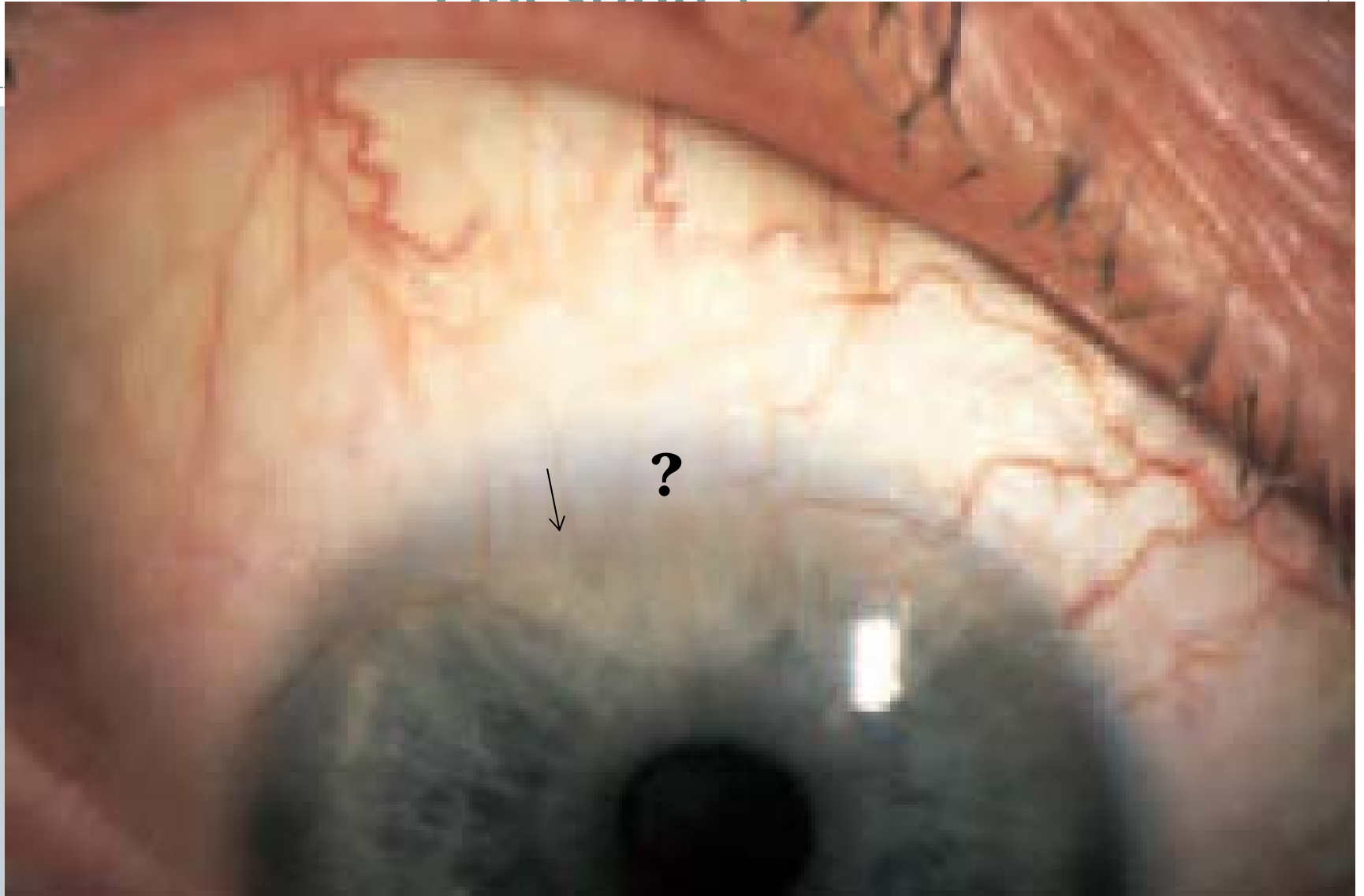


**Preauricular skin tags with this lesion.....What is the lesion and associated syndrome?**



- **Dermoid**
- **Goldenhaar Syndrome**

## Question 7



## Answer 7



- **Pannus**

## Question 8



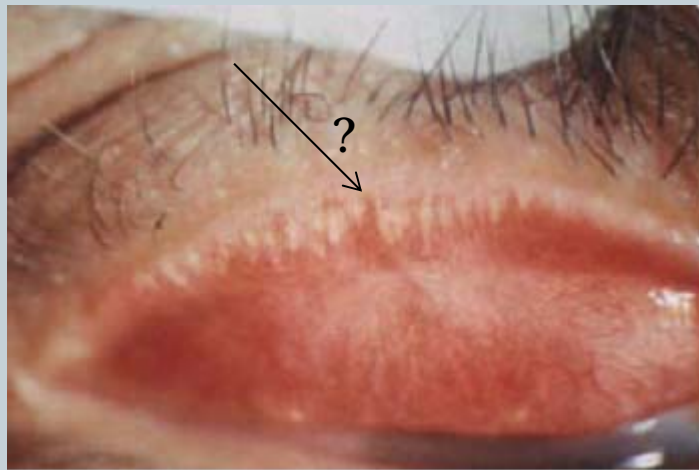
**Name the condition and its management?**

## Answer 3



- Giant Papillary conjunctivitis
- Topical and/or supratarsal steroids.....Excision of papillae with conjunctival graft

## Question 9



## Answer 9



- **Arlt's line**

## Question 10



**Name the lesion with its characteristics?**

## Answer 10



- Naevus
- Solitary, well defined, slightly elevated with a predilection for limbus, plica and caruncle

## Question 11



# Answer 11



- **Melanoma**

## Question 12



## Answer 12



- Bitot's spot

## Question 13



## Answer 13



- **Leukoplakic type of CIN**

## Question 14



## Answer 14



- **Sessile squamous papilloma**

## Question 15



**Clue: HIV positive**

## Answer 15



- **Kaposi Sarcoma**

## Question 16





- Phlycten
- Unilateral, umblicated, oval lesion with surrounding hyperemia
- Causes:
  - Staphylococcal infection
  - TB
  - HSV
  - Candidal infection

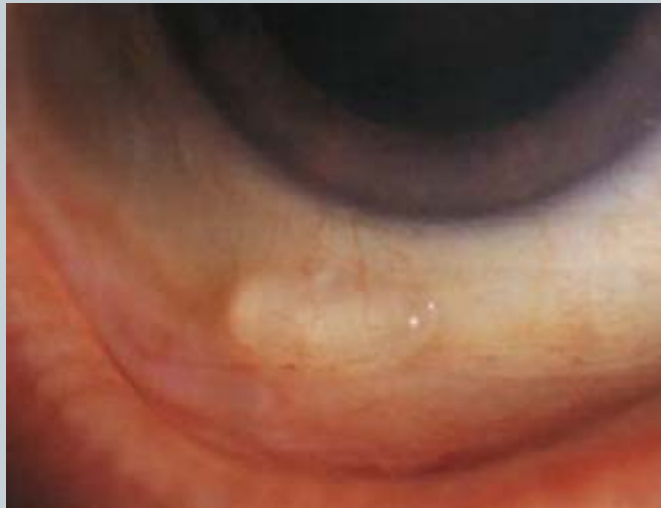
## Question 17





- **Post adenoviral conjunctivitis subepithelial corneal opacities**

## Question 18



- 
- **Conjunctival cyst**