

# 1. Organization and Function

**Particular of  
Organization,  
Functions, duties**

|     |  |
|-----|--|
| i.  | <p><b><u>NAME AND ADDRESS OF THE INSTITUTE:</u></b></p> <p><b>Government Medical College &amp; Hospital</b><br/>Sector 32, Chandigarh, PIN 160030</p> <p>Phone: EPABX No. 0172-2601023-24<br/>Enquiry No. 0172-2663301<br/>Fax No. 0172-2609360</p> <p>E-Mail: <a href="mailto:dpgmch-chd@gmch.gov.in">dpgmch-chd@gmch.gov.in</a></p> <p>Website: <a href="http://www.gmch.gov.in">www.gmch.gov.in</a></p>   |
| ii. | <p><b><u>HEAD OF THE ORGANISATION:</u></b></p> <p>Dr. Ravneet Kaur<br/>Director Principal,<br/>Government Medical College &amp; HospitalSector<br/>32, Chandigarh, PIN 160030</p> <p>Phone No. 0172-2601023-24 Ex: 4321<br/>Fax No. 0172-2609360</p> <p>E-Mail: <a href="mailto:dpgmch-chd@gmch.gov.in">dpgmch-chd@gmch.gov.in</a></p> <p><b>Brief Profile of Director Principal :</b><br/>Link: <a href="http://www.gmch.gov.in/about-us/meet-the-director/">http://www.gmch.gov.in/about-us/meet-the-director/</a></p> |

iii.

### VISION

Government Medical College & Hospital, Chandigarh, is committed to continuous up gradation to provide highest standard Medical Education and Healthcare. It is our Vision endeavor to develop a Model Medical Institution which is environment friendly as well as patient friendly. Total computerization, both for hospital management as well as in the administrative domain, is a step in this direction.

### MISSION STATEMENT

Government Medical College & Hospital, Sector-32 Chandigarh was mandated to

1. Provide high quality Patient Care.
2. Attain Self-Sufficiency in undergraduate and postgraduate medical education and to meet the country's need for highly Qualified medical teachers in all medical and surgical disciplines.
3. Provide Educational facilities for the training of personnel in all important branches of health activity.
4. Undertake Basic Community based research.
5. To provide preventive & promotive health care. The mission of GMCH is engraved in its logo which reads "In Service of Humanity"

### KEY OBJECTIVES

- To meet the medico-social needs of various communities.
- To provide comprehensive health care encompassing preventive, promotive, curative and rehabilitative healthcare.
- To provide round the clock state of the art diagnostic services/facilities.
- To provide specialised services in clinical, diagnostic and therapeutic fields.
- To act as a tertiary care medical institution.
- To act, specifically, as a regional overflow multi-disciplinary

institution (north region) for the referred cases.

- To participate in various national health programmes.
- To act as a centre for Continuing Medical Education Programmes.
- To render facilities for conducting research activities.
- To provide teaching to undergraduates, postgraduates doctors.
- To develop centres of excellence in the areas of need.

iv.

### **Function and duties (in brief):**

#### **Particular of Organization:-**

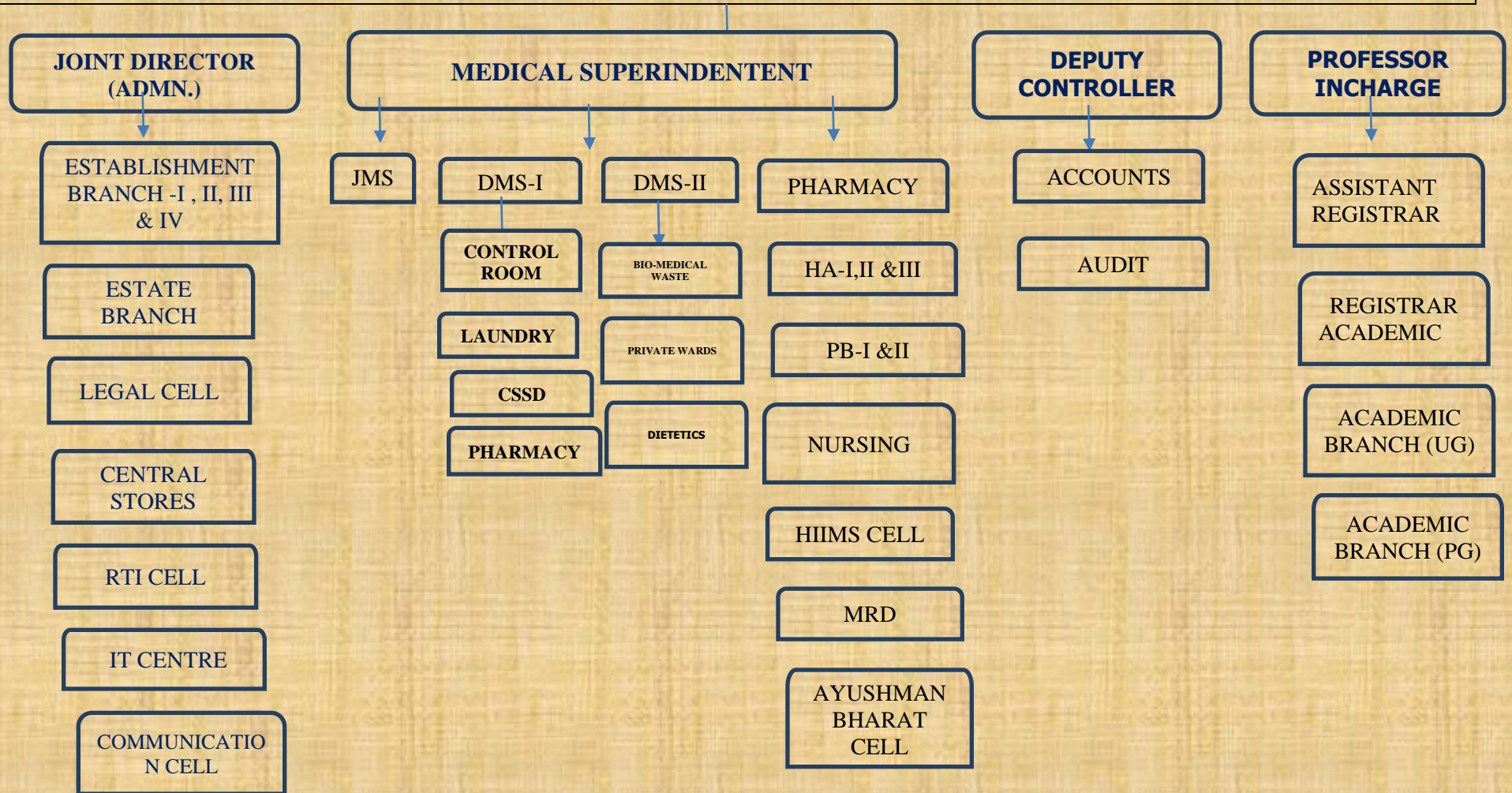
- Govt. Medical College & Hospital, Chandigarh, Sector-32, Chandigarh
- 1045 bedded teaching Hospital
- Affiliated to Panjab University, Chandigarh
- Recognized by the Medical Council of India.

#### **Function and duties (in brief):**

- Provides comprehensive health care, encompassing, preventive, promotive, curative and rehabilitative health care.
- Provides out patient care on all working days (Monday to Saturday) from 9 AM to 1 PM.
- Provides round the clock emergency services.
- Provides round the clock facilities of Intensive Care Unit (including Pediatric ICU & Neonatal ICU), Coronary Care Unit, Burns Unit and Indoor Wards.
- Provides state-of-art diagnostic services/ facilities in Clinical Pathology, Clinical Biochemistry, Clinical Microbiology, Blood Bank Services and Radio-Diagnosis including Ultrasound, CT Scan, MRI and X-ray.
- Participates in all National Health Programmes including Ayushman Bharat Scheme.
- Admits 150 MBBS students and 155 Post Graduate Students every year and carries out teaching and training of these under graduate and post graduate students.

# ORGANISATION CHART

## DIRECTOR PRINCIPAL



**1.1(vi)**

# **Government Medical College & Hospital Sector-32, Chandigarh**



## **Head of the Institute:**

**Director Principal,**

**Dr. Ravneet Kaur**

**Phone No. 0172-2601023-24 Ex: 4321**

**Fax No. 0172-2609360**

**Phone: EPABX No. 0172-2601023-24**

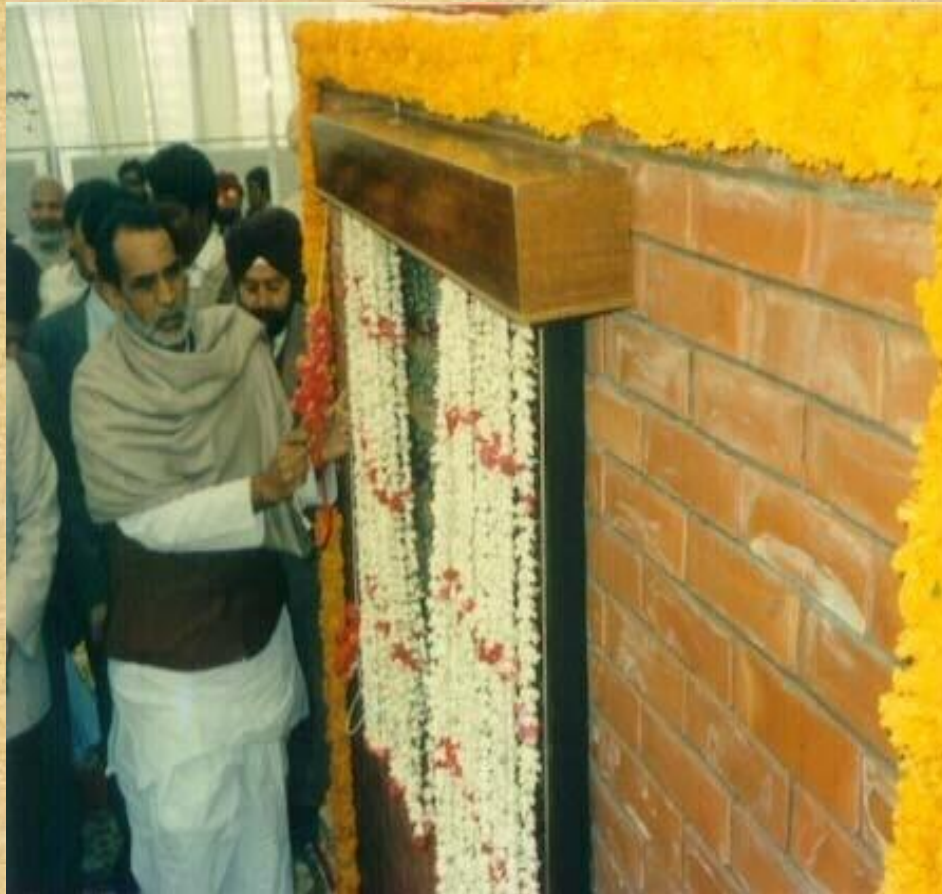
**Enquiry No. 0172-2663301**

**Fax No. 0172-2609360**

**E-Mail: [dpgmch-chd@gmch.gov.in](mailto:dpgmch-chd@gmch.gov.in)**

**Website: [gmch.gov.in](http://gmch.gov.in)**

# THE BEGINNING.....



- **Foundation stone:**  
**Shri Chandra Shekhar ji,**  
**Hon'ble Prime Minister**  
**of India on 20.01.1991**

# Layout plan



# Block 'A'



Started in 29.06.1995

- Labour room
- Burn Unit
- Wards
- NICU
- Operation Theatres
- Private Rooms
- Dialysis unit
- Emergency Labs
- Xray
- Chemist Shop

# Block 'B'

Started in 22.06.1999



- Out-patients' block (OPD)
- Central Stores
- Pharmacy Stores
- Medical Records
- Information Technology
- Blood Collection Center / Labs
- Canteen
- Pharmacy
- Conference Hall
- Legal Cell
- Physiotherapy
- Ayushman Counter
- Vaccination Room
- Birth & Death Registration Counter

# Block 'C'

Started in 22.09.2004

- Wards
- Operation Theatres
- HDU
- CCU
- Cath lab
- ICU
- CSSD
- Laundry
- Kitchen
- Mortuary
- Private Wards
- Repair Store
- Cafeteria
- AC Plant



# Block 'D'



Inaugurated on 18.02.2009 by  
H.E. Gen (Retd.) S.F.  
Rodrigues, PVSM, VSM, Governor of Punjab

- Director Principal Office
- Additional Director(Admn.)Office
- Medical Superintendent Office
- Administrative Branches
- Blood Bank
- Radiodiagnosis
- Dentistry
- Disability Cell
- Cafeteria
- Communication Cell
- Departmental Offices
- RTI Cell
- Ayushman Cell
- ATM
- SBI Bank
- Shopping Complex
- Chemist Shops

# Block 'E'



Foundation stone laid by Shri L K Advani, on 7.4.2000 became functional in 2016

- Pre-clinical departments
- Para-clinical departments
- Central Library
- Lecture Theatre
- Conference Hall
- Examination Hall
- Canteen
- Auditorium
- Sports Room
- Basement Parking

# Block 'T' (TRAUMA AND EMERGENCY)



- **Triage**
- **Medicine Emergency**
- **Pediatrics Emergency**
- **Orthopedics Emergency**
- **General Surgery Emergency**
- **Pediatrics ICU**
- **Medicine ICU**
- **Operation Theatre**
- **Organ Donation / Eye Bank**
- **Cafeteria**

# Hostels



- Started in 25.01.2001
- Students Hostel
- Nurses & doctors