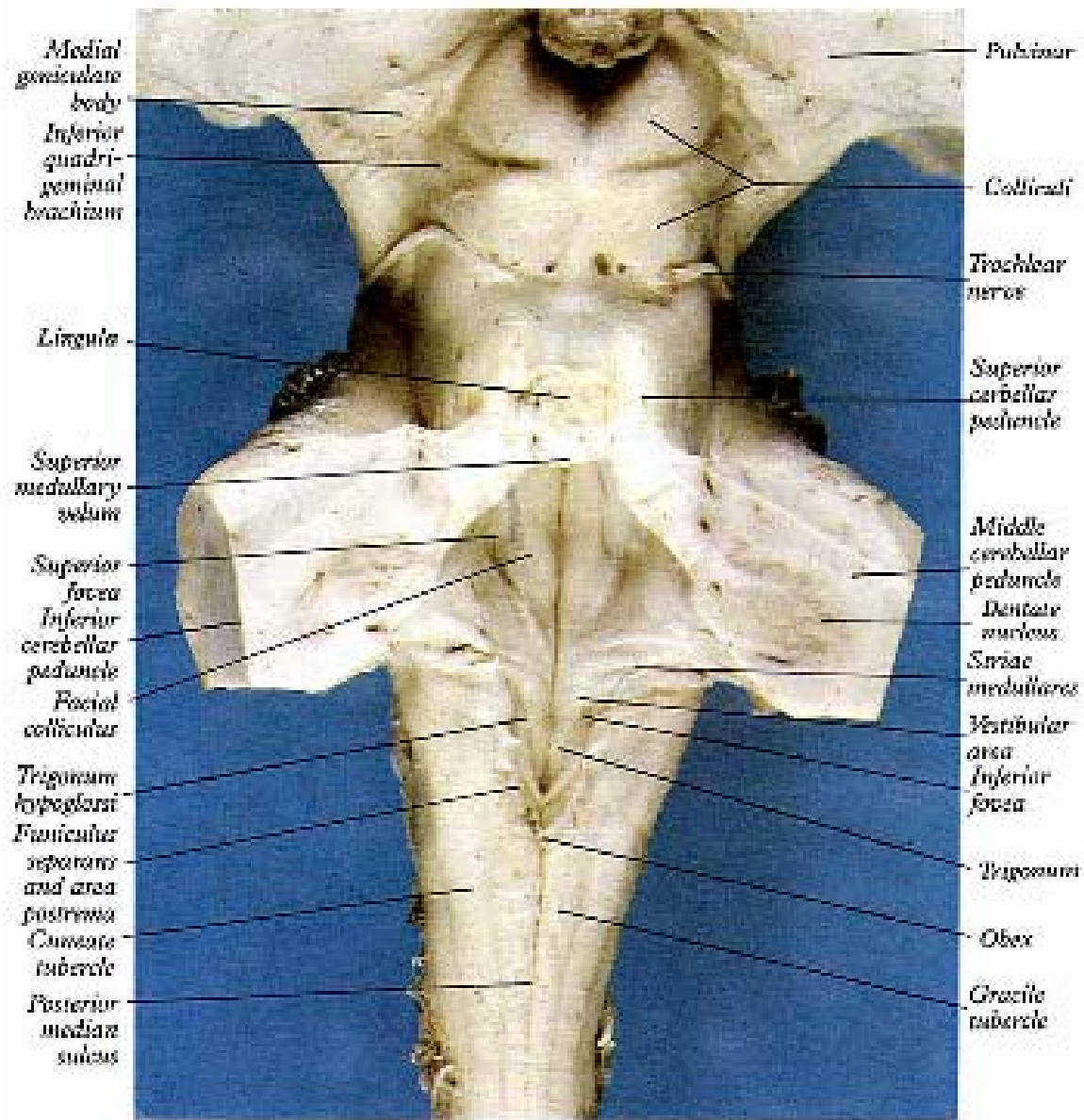
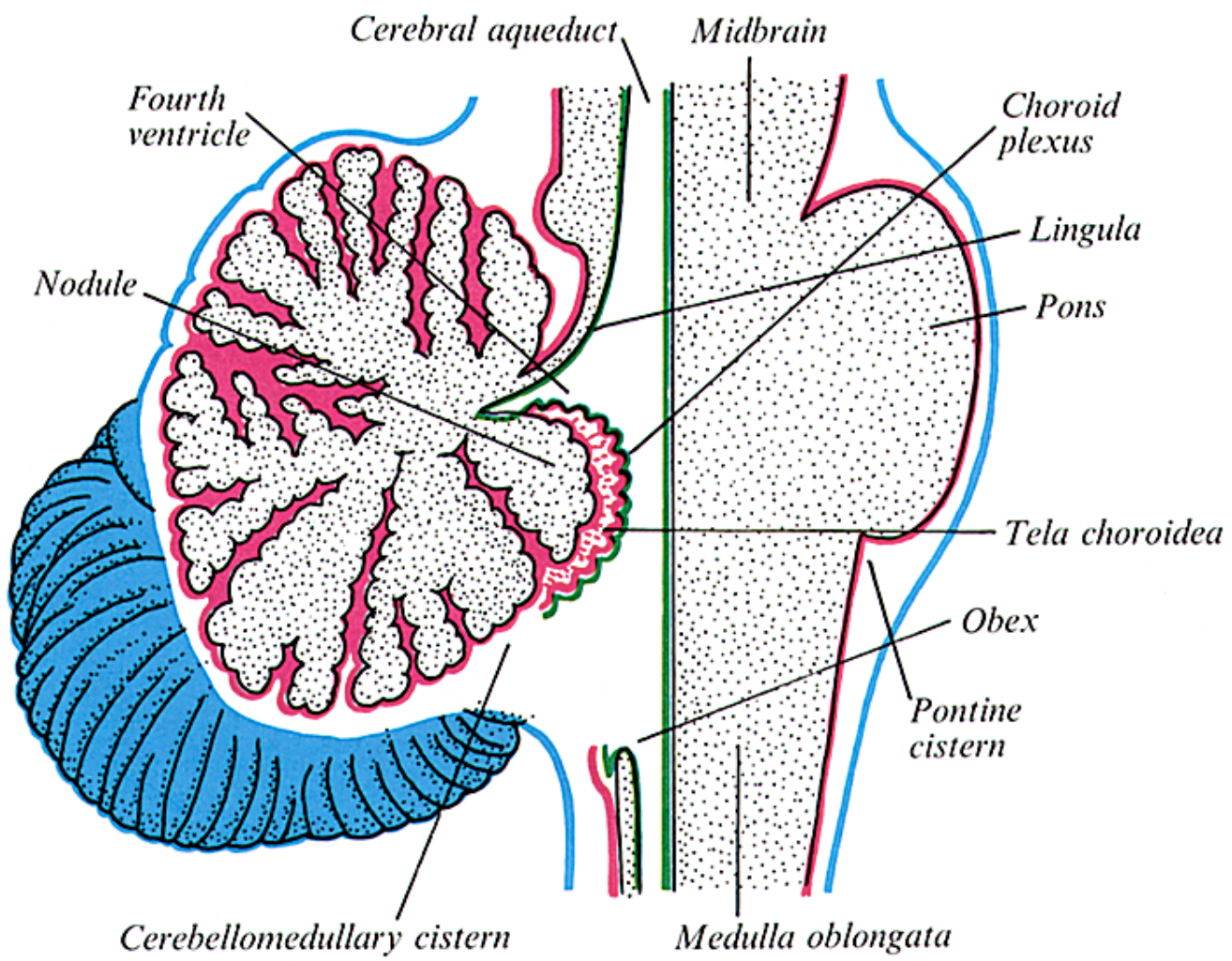


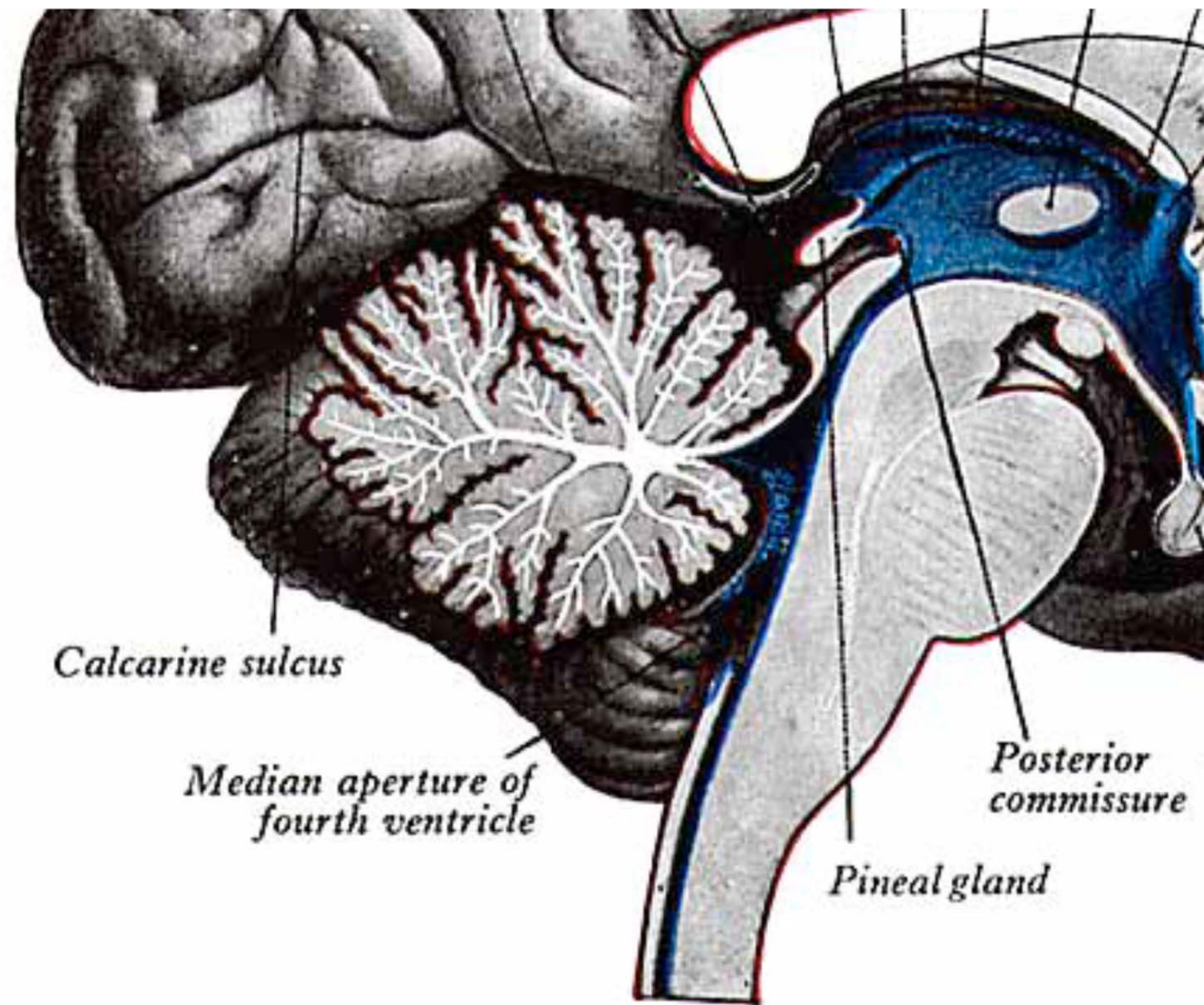
# Fourth ventricle

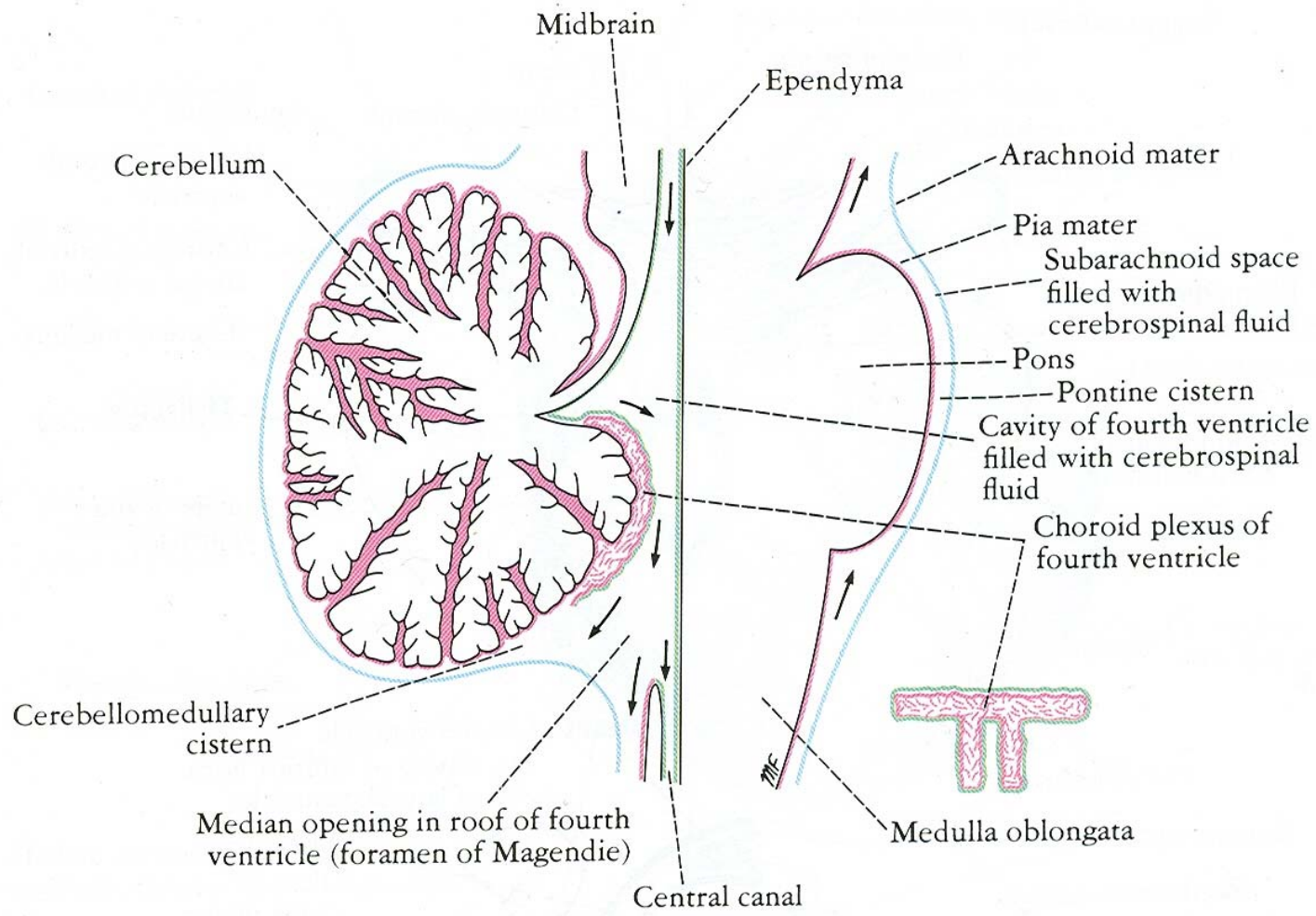
- Diamond shaped cavity of hindbrain
- Extent from superior border of pons to middle of medulla.
- Above continuous with the cerebral aqueduct, below with the central canal of inferior half of medulla.
- Widest at the junction of pons and medulla

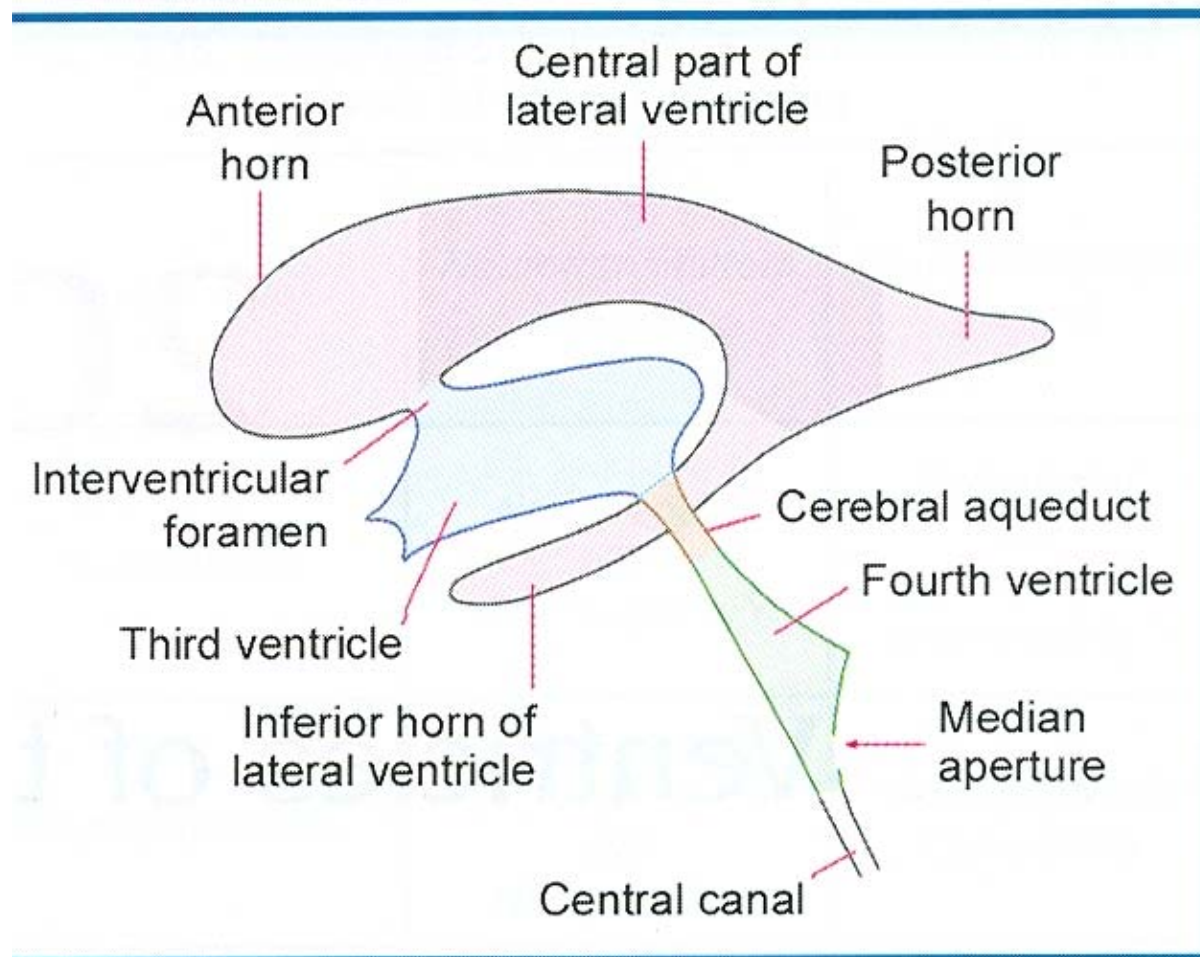








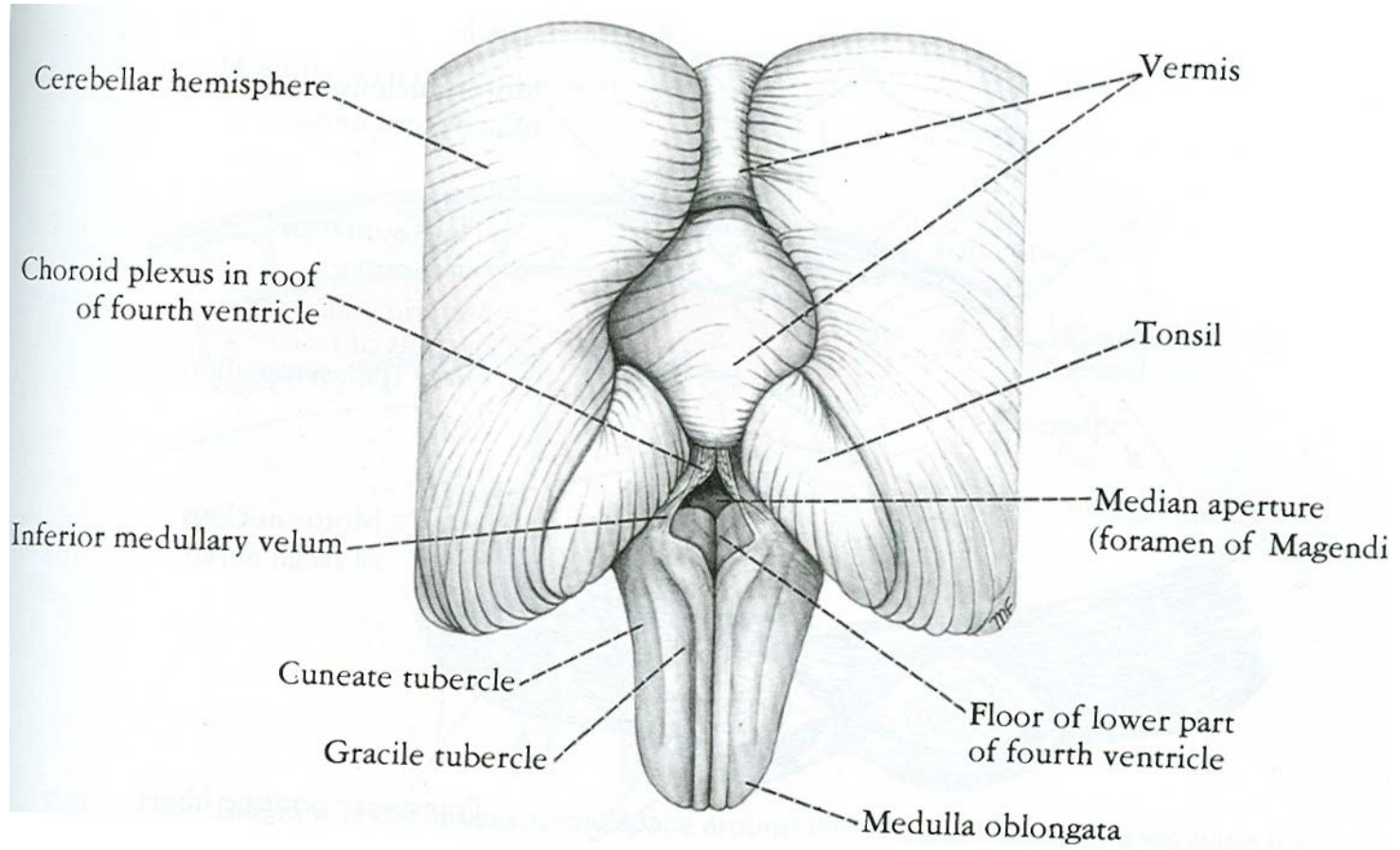


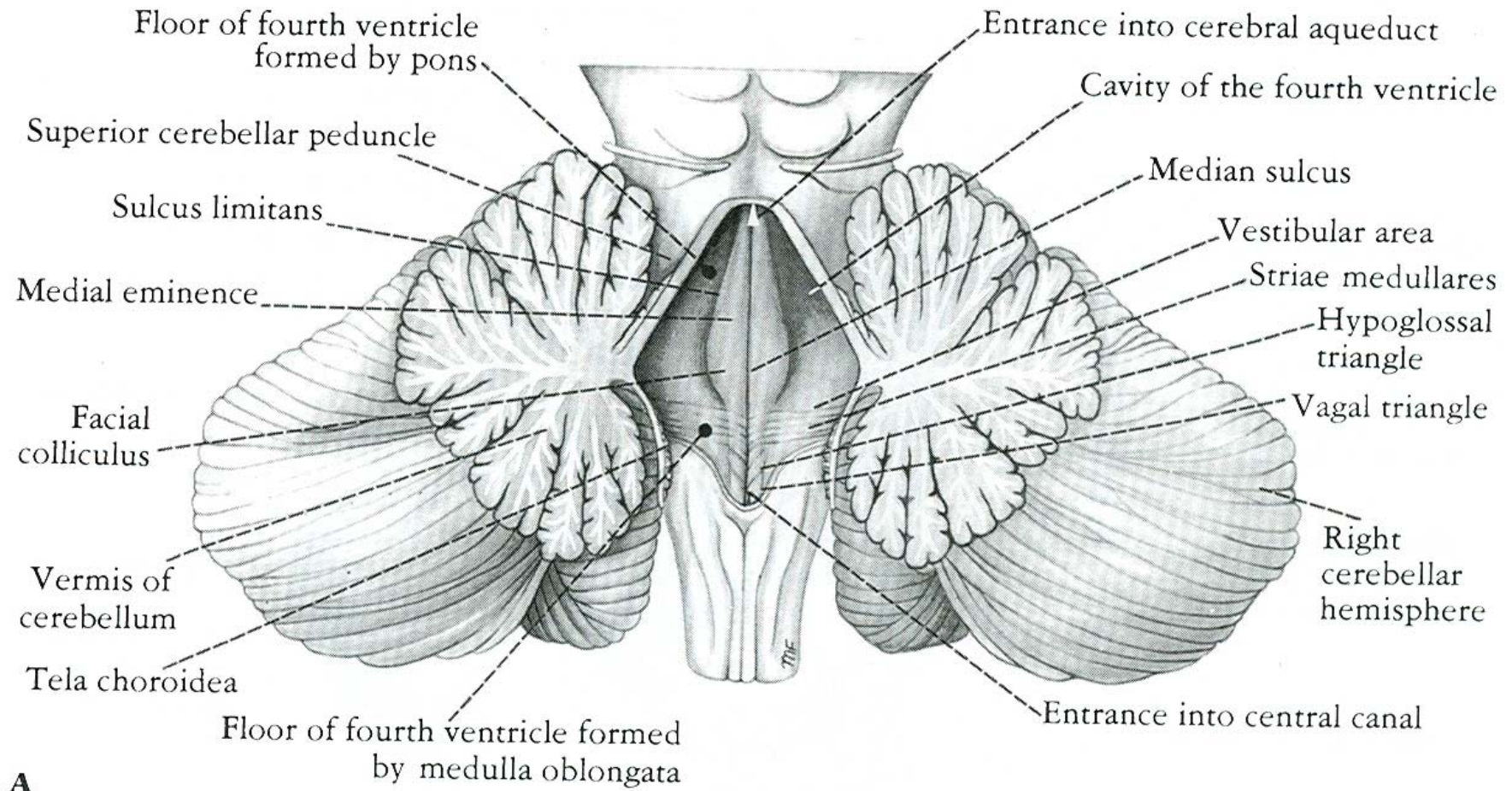


# Boundaries

- Roof: superiorly superior medullary velum fused with the lingula, stretches between SCP; inferiorly deficient, tela choroidea invaginates and along with ependyma forms the choroid plexus.
- Lateral boundaries are SCP, ICP, gracile and cuneate tubercles.







- Floor: posterior surface of pons and superior half of medulla
- Floor covered by ependyma
- Features: Median sulcus, facial colliculus, medullary stria, superior and inferior fovea, locus coeruleus
- Nuclei: Hypoglossal, vagal, vestibular
- Taenia, obex, funiculus separans, calamus scriptorius, area postrema

